

BATHROOM VANITY DESIGN GUIDE



Looking for a beautiful vanity for your bathroom? You've come to the right place! We have many in-stock vanities ready to take home or we can place a custom vanity order for you.

We have tops to go with your vanity. We have a mix and match option so you can decide which bathroom vanity cabinet and top combination you prefer.

Things to consider:

1. The industry standard height of a vanity is 34 1/2 inches tall without the top. Some of our vanity cabinets can be customized to a shorter height.
2. The industry standard depth of a vanity is 21 inches. Some vanities also come in 18 inch depth. The depth can also be customized to certain sizes.
3. The location of your plumbing is important. The placement of the vanity can be adjusted for the plumbing and sink to align.
4. Make sure you consider the clearance for any door and drawer openings. See next page for key measurements.

Any questions? Feel free to contact us:
781-933-3339
info@kitchenpeople.com
215 Salem Street, Woburn MA 01801



KEY MEASUREMENTS

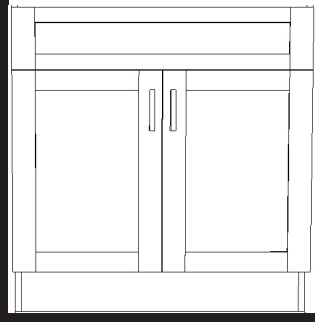
Having measurements of your current bathroom vanity and space is critical in giving us an understanding of your project. Below are some key measurements that are important for making sure your vanity is going to fit into your space. Please make sure to note the location of your plumbing.

Current cabinet depth (front to back) is: _____ inches

Current cabinet height (including top) is: _____ inches

My room's floor to ceiling height is: _____ inches

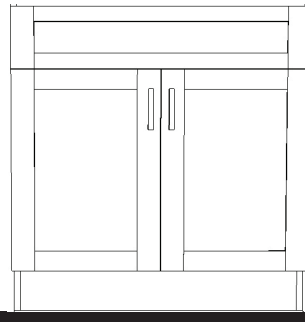
Vanity against
the left wall.



Measure wall
to right edge
of cabinet:

_____ inches

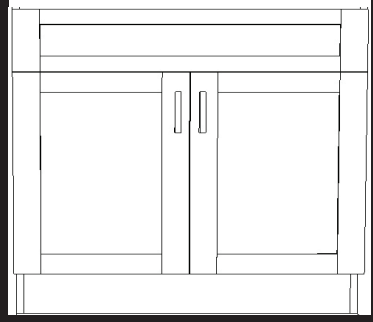
Vanity against
the right wall.



Measure left
edge of
cabinet to
wall:

_____ inches

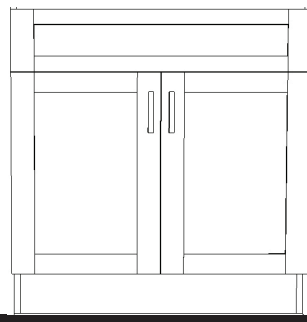
Vanity between
two walls.



Measure wall
to wall:

_____ inches

Vanity between
no walls.



Measure
maximum
available space
or current
cabinet width:

_____ inches